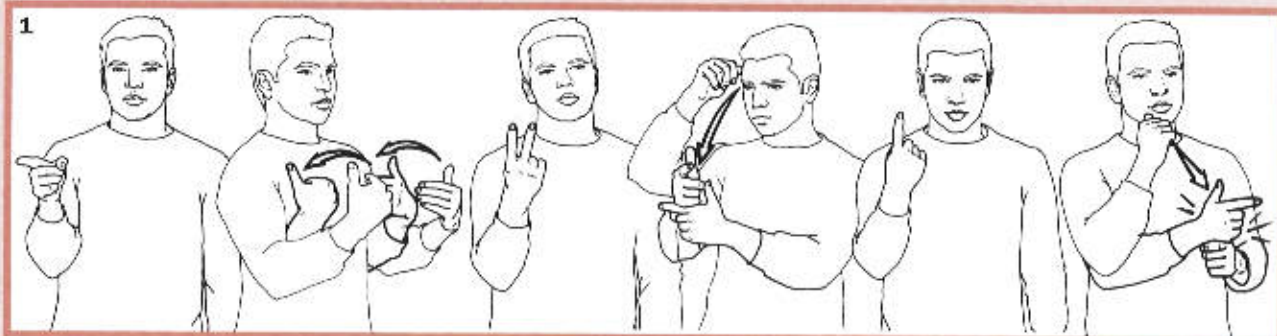


## Unit 4 Review

**A** A friend is visiting and you are looking through family albums. Describe the members of the Perez and Carter families, and explain what each family was doing when the picture was taken.

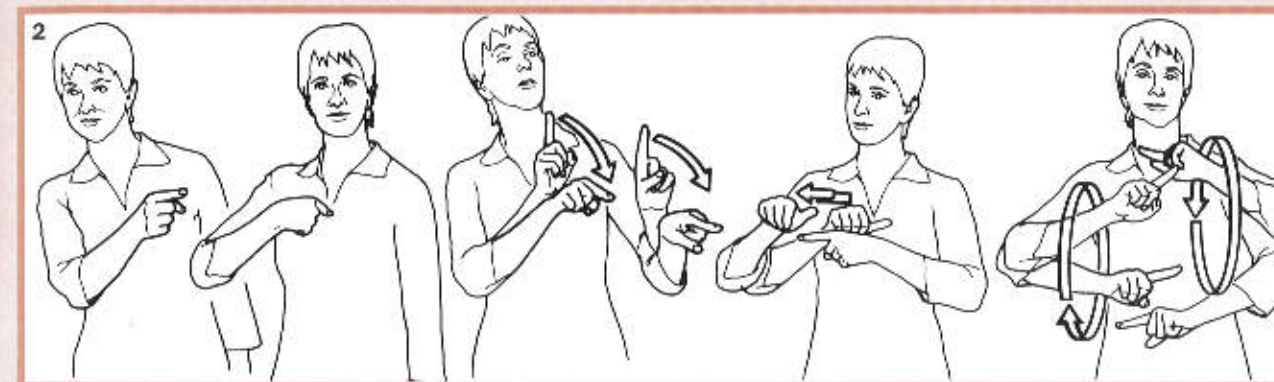
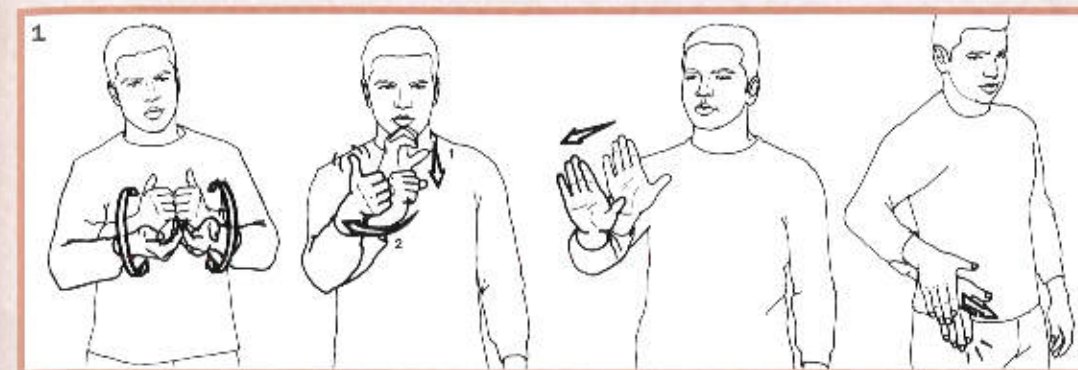


**B** What is contrastive structure? Locate and correct the contrastive structure errors below.



## Unit 4 Review

**C** Identify and correct the errors in the sentences below. Why are they wrong?



**D** Sign each sentence in ASL.

1. *The three of them are 22, 35, and 67.*
2. *I've known her since I was 8 years old.*
3. *The four of us are going to the movies on Saturday night.*
4. *My little sister is cute but annoying. She likes to be mischievous.*
5. *He has two dogs, one cat, and two fish.*
6. *He is a coda; his parents are Deaf but his brother and sister and he are hearing.*

## Unit 5 Review

**A** Tara and Scott have come to talk with their school counselor about courses to take that will help them achieve their goals. Explain to each what courses he or she should take, and why.



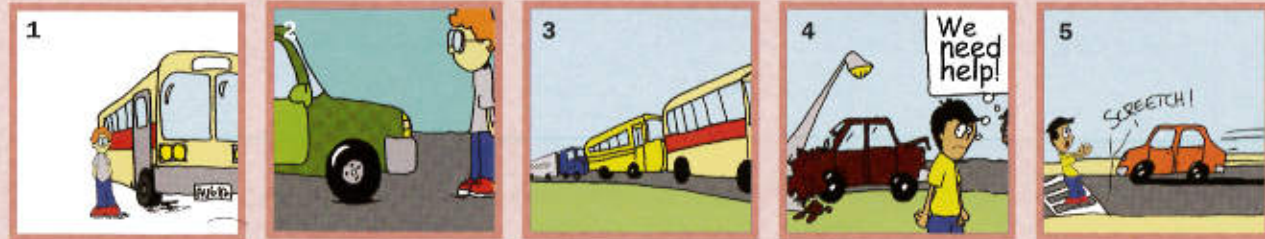
**B** Grades have come out and a group of friends are comparing how well each did. Describe which courses were taken and the grades earned. Use the Listing & Ordering Technique.

Report Card	
Reading	F
English	F
Math	F
Art	D
Gym	D

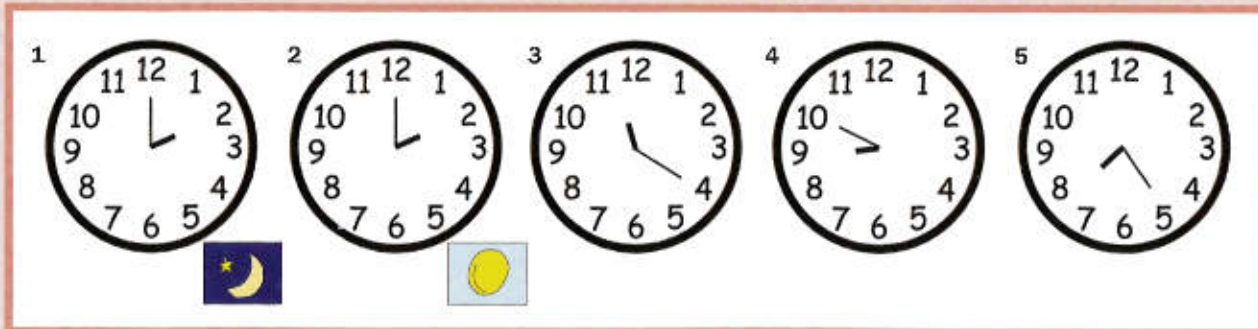
Report Card	
Reading	B
English	B
Math	A
Art	C+
Gym	A-

Report Card	
Reading	A
English	B
Math	B
Art	B+
Gym	B-

**C** Describe each scene using the appropriate classifiers.

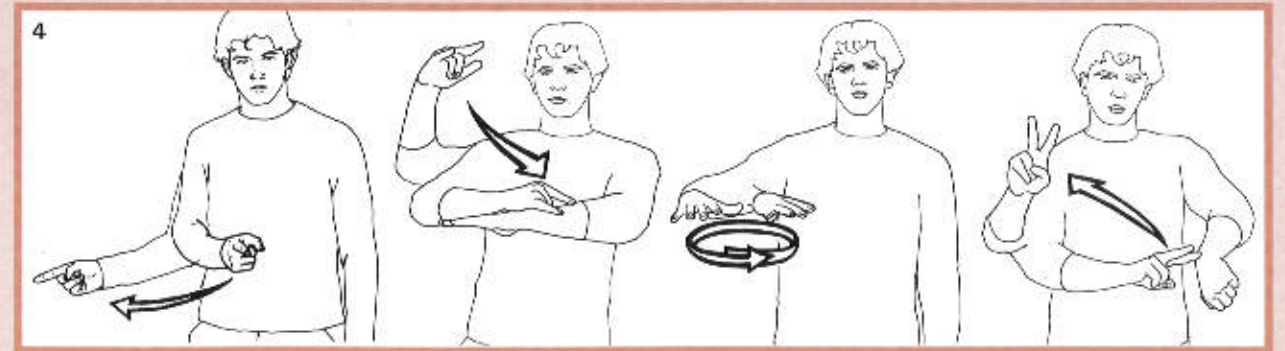
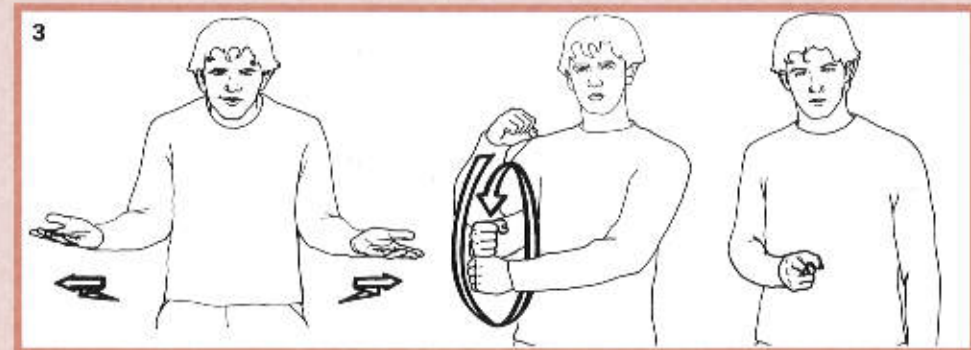
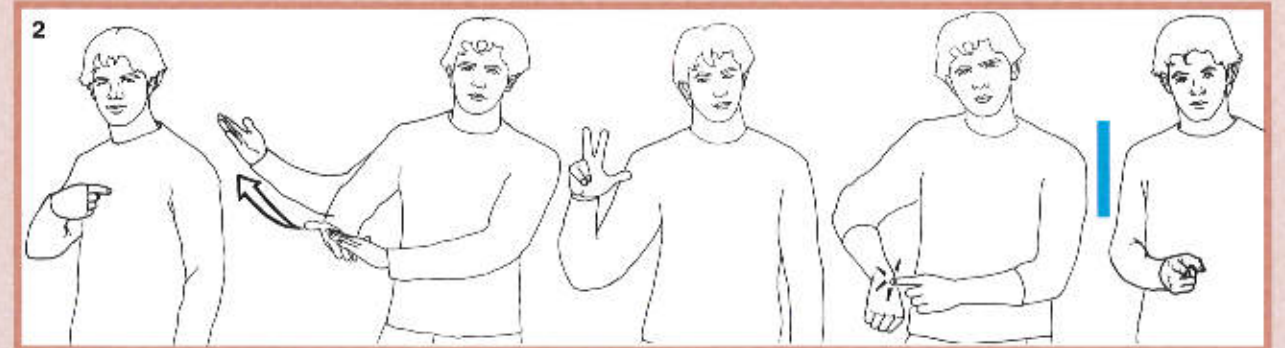
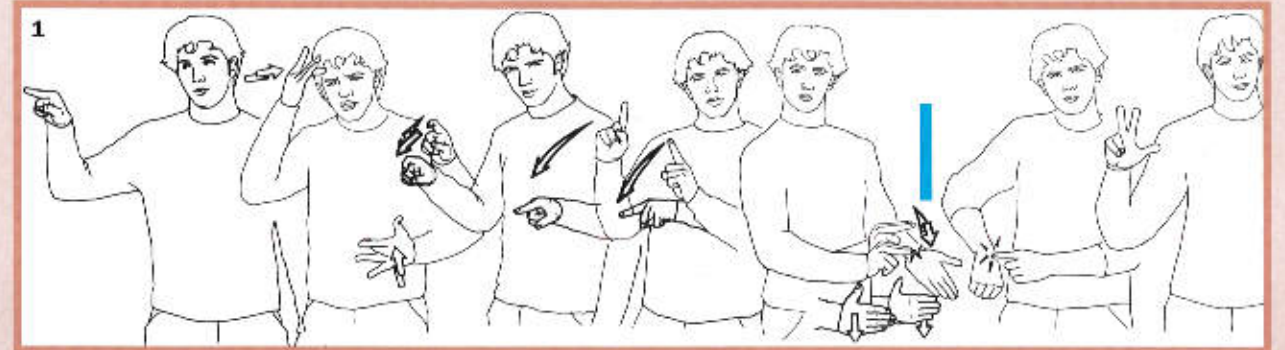


**D** What time is it?



## Unit 5 Review

**E** Identify and correct the errors in the sentences below. Why are they wrong?



## Journal Activities

- 1 Many people are unaware that American Sign Language and English are separate languages, despite constant correction. Why do you think it's difficult for hearing people to realize, and accept, that ASL has no relationship to English? Why is it easier to accept a spoken language as "real" but not a signed language?
- 2 Why do you think many people tend to use Pidgin Sign English (PSE) instead of ASL? Some suggest those who use PSE expect deaf people to "do all the work" to understand what is signed. What attitudes and assumptions does this imply about Deaf people, hearing people, and ASL? Can these attitudes and assumptions be changed? How?
- 3 Who benefits from captioning on television and movies? In your opinion, what are the benefits and drawbacks of captioning? Why do some places, such as airports, resist installing captioning systems? Write a business letter presenting your thoughts on captioning access.

- 4 Reflect on the mixed-media work titled *Deaf Pride* by Deaf artist Ann Silver. What is her point? Why did she choose to express herself this way? How does combining a national icon with her social commentary affect those who see it? What do you think Ann Silver wanted people to think about when looking at *Deaf Pride*? Why?




— *Deaf Pride* (1999), Ann Silver.  
Reproduced by permission of artist.

## http://Search

Search the internet to learn more about these topics.

- Closed captioning
- Open captioning
- Subtitles
- Real time captioning
- Computer assisted real time captioning
- Americans with Disabilities Act, 1990
- Pidgin languages
- Creoles

## Unit 7 Review

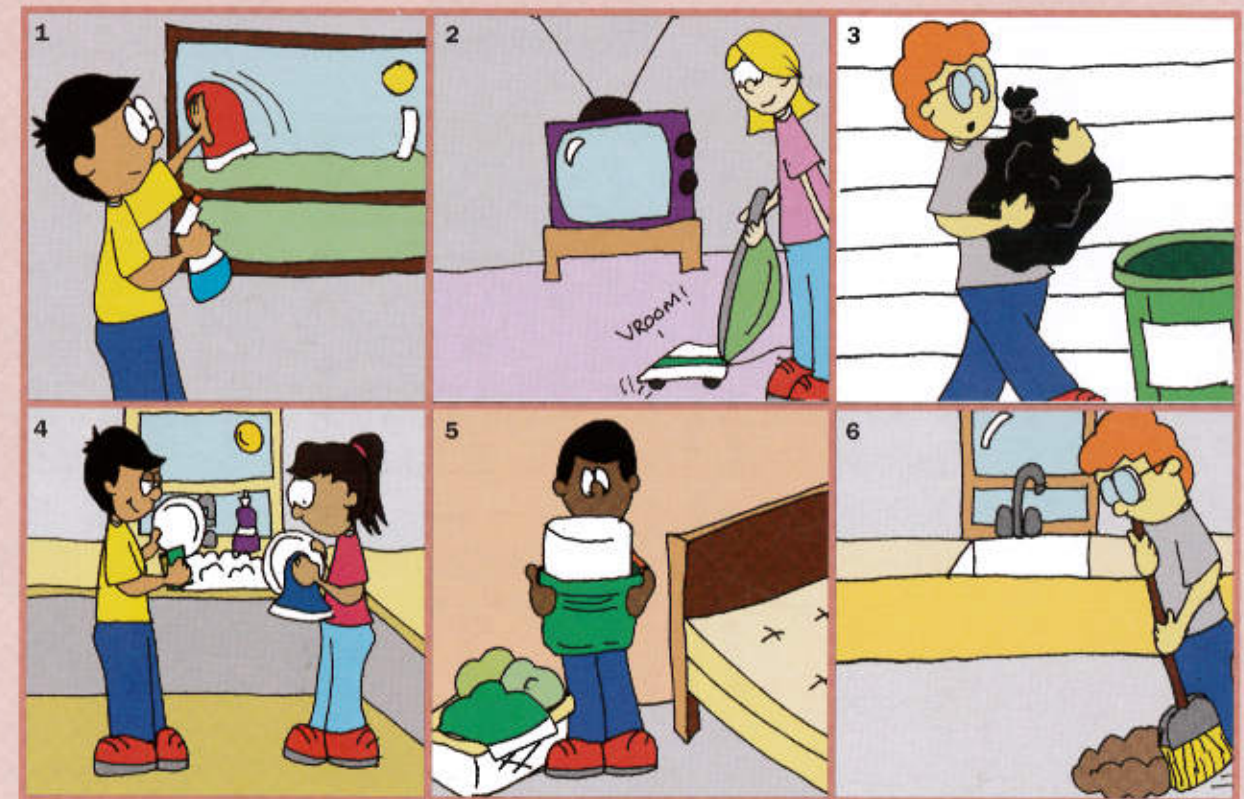
- A**  *Comprehension.* Watch Kelly's narrative titled *What's your routine?* on your Student DVD. Respond to the questions below.

1. Is Kelly's schedule the same every day? Why not?
2. What does Kelly do after school? Does she do this every day?
3. What time does Kelly have practice? What sport does she practice?
4. What does Kelly do every night?
5. What is Kelly always doing?



- Expressive Skills.* Practice signing Kelly's narrative. Focus on clarity instead of speed, and include non-manual signals when necessary.

- B** It's time for spring cleaning and the residents of this apartment building are catching up on chores. Describe each scene and explain what is being done.



- C** Describe your typical week, including times, activities, and routines. Then describe your ideal routine, and explain what you would do differently. Use the following prompts to enhance your description.

*exercise*  
*chores / duties*  
*work*

*school*  
*morning routines*  
*weekend plans*

*dream vacations*  
*ASL class*  
*wake up times*

## Unit 7 Review

**D** Describe the Pick family routine. Arrange each activity into morning, afternoon, and evening periods using spatial organization.



**E** Discuss Marc's monthly schedule. What does he do every week?



**F** Describe each individual's attire in complete detail.



## UNIT EIGHT

# Describing People



### Unit Eight Objectives

- To describe people's physical appearances
- To describe personality traits and characteristics
- To improve ASL narrative skills
- To learn about Deaf-Blind communication
- To discuss health issues
- To describe the natural world and environment